



Easter Ferry Road Superelevation Correction and Shoulder Addition

A Safety Project Funded Through ALDOT HRRR Grant Funds

Site

- Rural Northwest Limestone County
- Major Collector used to travel to Athens
- Terrain transitions from flat farmland to rolling forested and then to flat river floodplain farmland



Site

- Rural Northwest Limestone County
- Major Collector used to travel to Athens
- Terrain transitions from flat farmland to rolling forested and then to flat river floodplain farmland



Problem

- Rural major collector route.
- Vehicles tend to travel at higher than posted speed.
- Vegetation in Right of Way Obstructs visual indication of the upcoming curve.
- In the 5 years leading up to this project, there were 3 Incapacitating Injuries and 2 fatalities.



What had been done?

- Upgraded signage
- Mowing and tree trimming

Identify Project Goals



REDUCE ACCIDENTS



BE ABLE TO BE MAINTAINED
BY COUNTY FORCES



COST EFFECTIVENESS

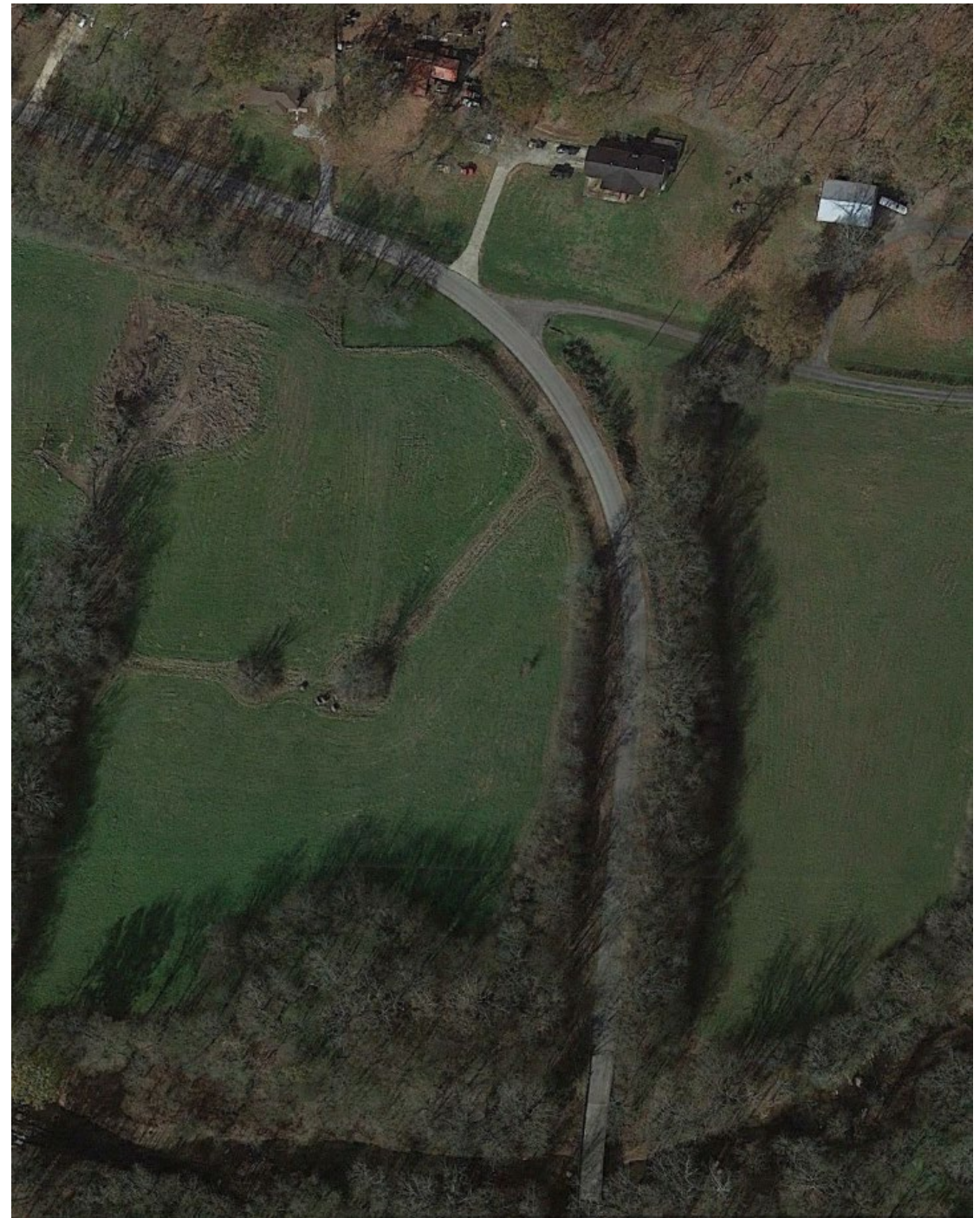
What Could be Done?

- Remove the vegetation
- Additional Signage
- High Friction Course Asphalt
- Guardrail
- Widen Shoulders
- Adjust Shoulder Slopes
- Lighting
- Adjust the Super Elevation
- Adjust the Horizontal Alignment



Chosen Solution

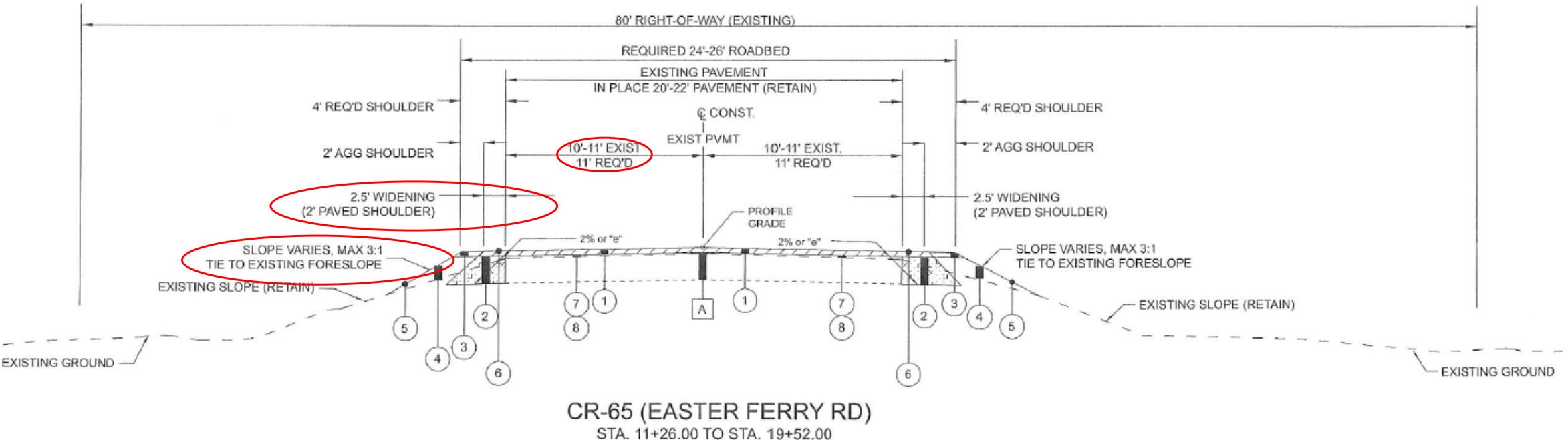
- Vegetation removal in the Right of Way



Chosen Solution

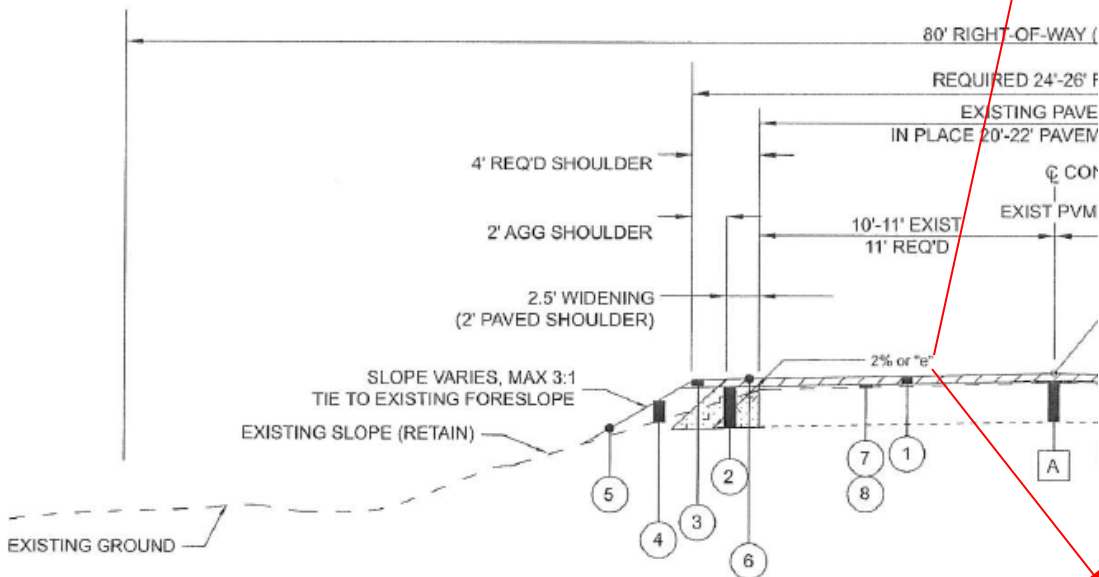
- Vegetation removal in the Right of Way
- Lane Widening
- Shoulder Widening with Scoring
- Flattening Front Slopes

IN-PLACE AND REQUIRED MATERIALS LEGEND		
①	424A-340	REQUIRED SUPERPAVE BITUMINOUS CONCRETE WEARING SURFACE LAYER, 1/2" MAXIMUM AGGREGATE SIZE MIX, ESAL RANGE A/B (APP. 165 LBS/SY)
②	424C-350	REQUIRED SUPERPAVE BITUMINOUS CONCRETE BASE LAYER, WIDENING, 1" MAXIMUM AGGREGATE SIZE MIX, ESAL RANGE A/B (APP. 330 LBS/SY)
③	430B-043	REQUIRED AGGREGATE SURFACING (1" DOWN, CRUSHER RUN) (APP. 3" THICK)
④	210D-001	BORROW EXCAVATION (LOOSE TRUCKBED MEASUREMENT) (THICKNESS VARIES)
⑤	650A-000	TOPSOIL (APP. 4" THICK)
⑥	428A-001	SCORING BITUMINOUS PAVEMENT SURFACE
⑦	408A-051	PLANING EXISTING PAVEMENT (APPROXIMATELY 0.00" THRU 1.0" THICK)
⑧	424B-642/ 424B-644	SUPERPAVE BITUMINOUS CONCRETE UPPER BINDER LAYER, LEVELING, 1/2" MAXIMUM AGGREGATE SIZE MIX, ESAL RANGE A/B / SUPERPAVE BITUMINOUS CONCRETE UPPER BINDER LAYER, LEVELING, 1" MAXIMUM AGGREGATE SIZE MIX, ESAL RANGE A/B
A		IN-PLACE PAVEMENT (PLANE & RETAIN)



Chosen Solution

- Vegetation removal in the Right of Way
- Lane Widening
- Shoulder Widening
- Flattening Front Slopes
- Correct Super Elevation

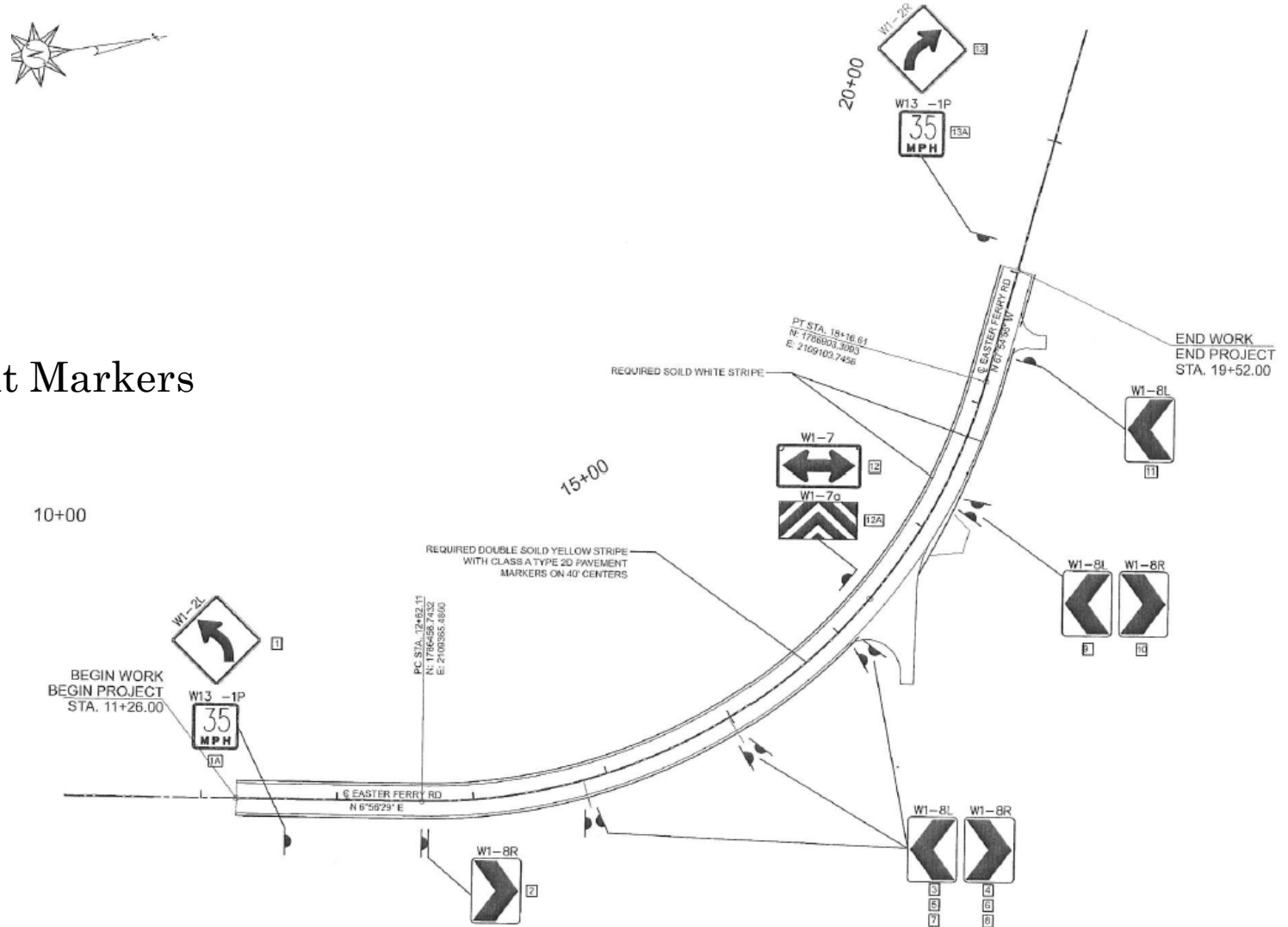


STA.	EX. X-SLOPE LT.	REQ'D X-SLOPE LT.	PLANING THICKNESS LT. EOP	LEVELING THICKNESS LT. EOP	LEVELING THICKNESS CLRD	LEVELING THICKNESS RT. EOP	PLANING THICKNESS RT. EOP	REQ'D X-SLOPE RT.	EX X-SLOPE RT.
	%	%	INCHES	INCHES	INCHES	INCHES	INCHES	%	%
COUNTY ROAD 65									
11+26 - BEGIN PROJECT		MATCH EXIST.	0.0	0.0	0.0	0.0	0.0	MATCH EXIST.	
11+50	-4.5	-2.0	0.0	3.4	0.0	0.0	0.0	-0.3	-0.2
11+59.81	-4.7	-2.0	0.0	3.6	0.0	1.2	0.0	0.0	-0.2
11+93.62	-5.6	-2.0	0.0	3.6	0.0	1.2	0.0	2.0	-0.1
12+00	-5.5	-2.4	0.0	4.2	0.0	2.8	0.0	2.4	-0.1
12+50	-6.5	-5.0	0.0	1.7	0.0	4.0	0.0	5.0	2.7
12+96	-9.5	-7.6	0.0	0.0	0.0	0.0	0.0	7.6	5.8
13+00	-9.6	-7.6	0.0	1.9	0.0	3.6	0.0	7.6	6.0
13+50	-13.8	-7.6	0.0	7.1	0.0	0.0	0.1	7.6	7.7
14+00	-13.3	-7.6	0.0	8.3	0.7	0.0	0.3	7.6	7.9
14+50	-12.5	-7.6	0.0	8.3	1.4	0.0	0.9	7.6	8.5
15+00	-15.6	-7.6	0.0	9.6	0.0	0.0	0.0	7.6	7.1
15+50	-13.4	-7.6	0.0	8.9	0.0	0.0	0.0	7.6	7.3
16+00	-13.2	-7.6	0.0	7.6	0.0	1.3	0.0	7.6	7.0
16+50	-13.1	-7.6	0.0	9.1	1.8	0.0	1.1	7.6	8.7
17+00	-13.9	-7.6	0.0	9.1	0.8	0.0	0.6	7.6	8.2
17+50	-12.5	-7.6	0.0	9.5	3.1	0.0	2.6	7.6	10.2
17+82	-12.2	-7.6	0.0	0.0	0.0	0.0	0.6	7.6	8.2
18+00	-11.1	-7.1	0.0	4.2	0.0	0.0	0.0	7.5	7.5
18+50	-9.7	-5.6	0.0	4.7	0.0	0.0	0.6	7.3	7.9
19+00	-7.7	-4.1	0.0	5.0	0.0	5.0	0.0	7.1	1.9
19+50	-2.6	-2.6	0.0	0.0	0.0	0.0	0.0	6.9	6.9
19+52 - END PROJECT	-2.6	-2.6	0.0	0.0	0.0	0.0	0.0	6.9	6.9

CR-65 (EASTERN AVENUE)
STA. 11+26.00 TO STA. 19+52.00

Chosen Solution

- Vegetation removal in the Right of Way
- Lane Widening
- Shoulder Widening
- Flattening Front Slopes
- Correct Super Elevation
- Add Signage and Pavement Markers



Chosen Solution

- Vegetation removal in the Right of Way
- Lane Widening
- Shoulder Widening
- Flattening Front Slopes
- Correct Super Elevation
- Add Signage and Pavement Markers

Benefits

- Construction could be completed under traffic (Only Short-term Closures)
- Maintenance can be completed by County Forces (Utilization of familiar materials)
- Construction Cost

Completed Project



Completed Project



Completed Project



Completed Project



Project Completion

- Project was Completed September 10, 2021
- \$244,524.00 Construction Cost (County Match of \$24,452.40)

Did We Meet Our Project Goals?



REDUCE ACCIDENTS



ZERO SINCE COMPLETION



BE ABLE TO BE MAINTAINED
BY COUNTY FORCES



FAMILIAR MATERIALS AND
MAINTANANCE ITEMS



COST EFFECTIVENESS



HRRR ELIGIBLE WITH
10% COUNTY MATCH

Questions ?