

ADVANCING SAFETY IN THE HEART OF ALABAMA

Alabama Road Safety Conference

October 2025



Mike Kaczorowski, PE
Regional Planning Commission
of Greater Birmingham

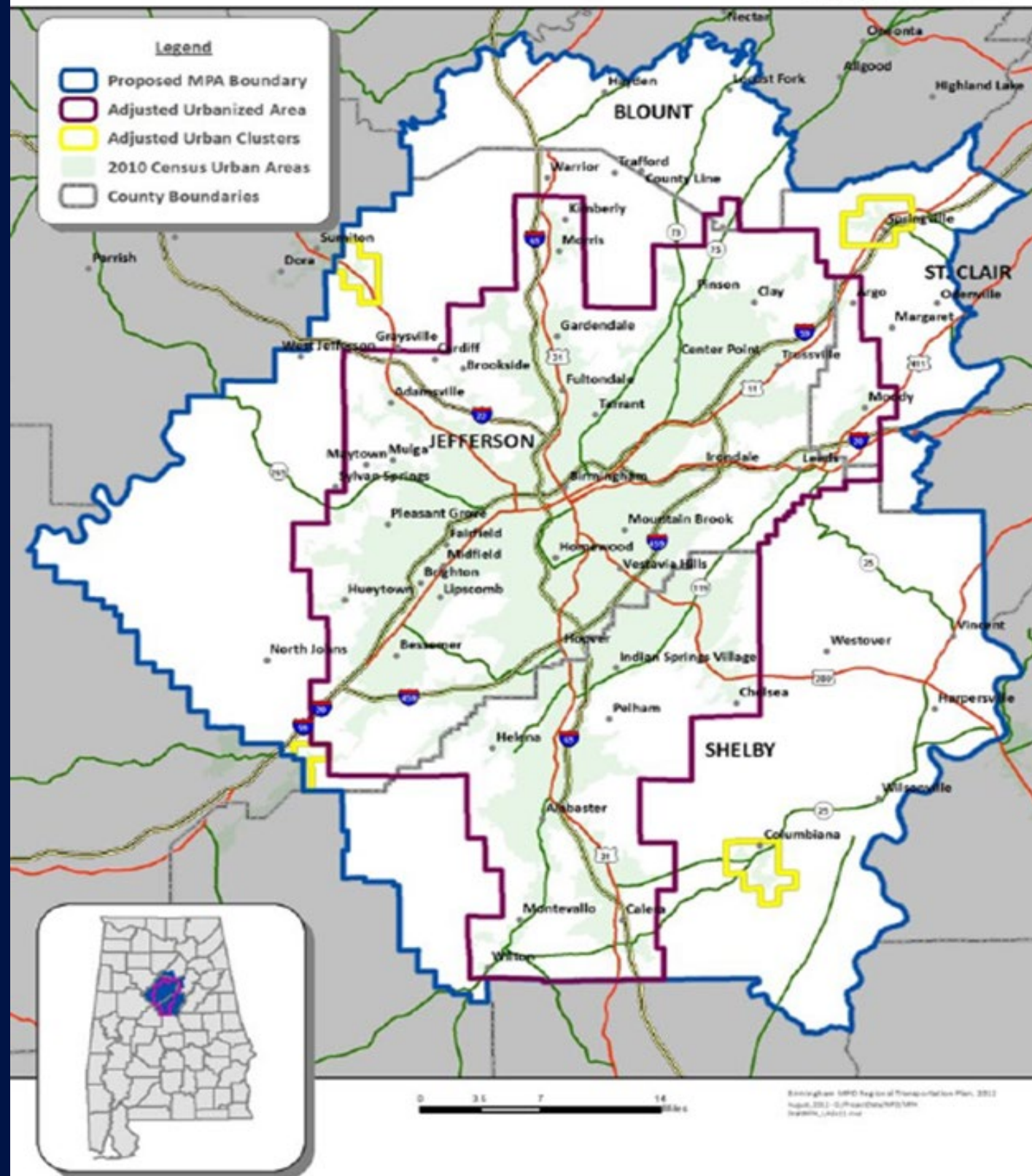


Becky White, PTP
Sain Associates, Inc.

Moving goods and people through your community safely is critical to quality of life.



BIRMINGHAM MPO AREA
METROPOLITAN PLANNING AREA & ADJUSTED URBANIZED AREA



BIRMINGHAM MPO REGION

- Jefferson & Shelby Counties
- Portions of Blount & St. Clair Counties
- 54 Municipalities



HEART OF ALABAMA RPO REGION

- Blount, Chilton, St. Clair and Walker Counties



RPCGB and Road Safety

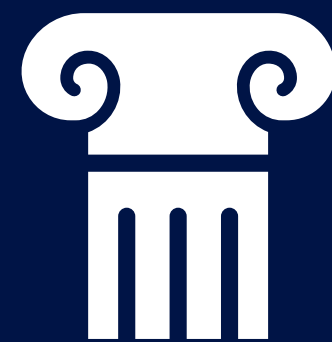
Education



Advocacy



Support



New in 2025!

RPC *Heart of Alabama* SAFETY ACTION PLAN

APRIL 2025



12,451

Facebook Reaches and
Twitter Impressions



46

Task Force Members



1,105

Survey Responses



30

Engagement Events



105

Zip Codes Represented
in Survey



20

Social Media Posts

Goal:
Reduce fatal &
serious injury
crashes by 5% per
year by 2045



185,610

Total Crashes

3,471

Total Serious Injury Crashes

835

Total Fatal Crashes

Typical KSI Crash Attributes

Male Driver

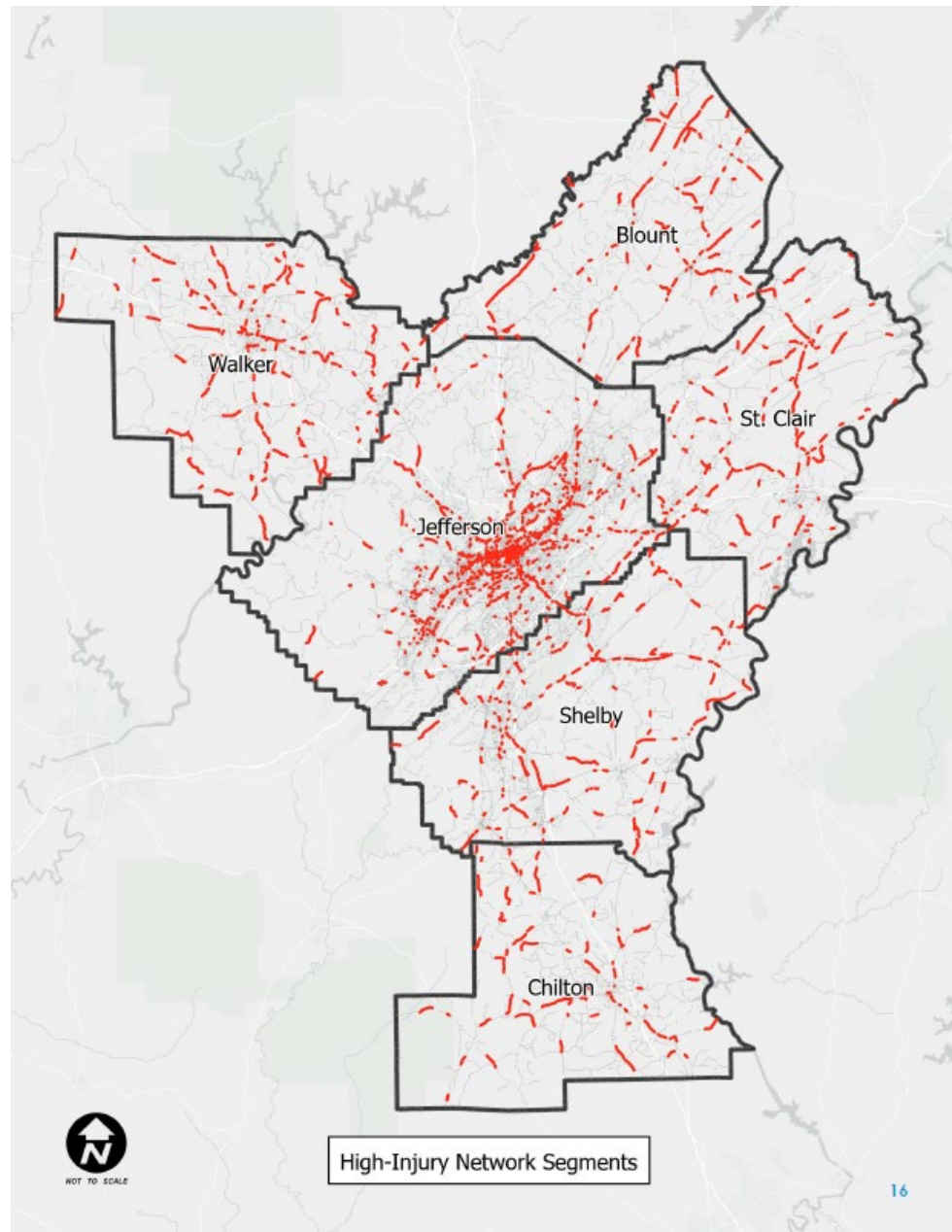
Age 15-25

State Roadway

Dark Conditions

Failure to yield, VRU-involved,
aggressive operation (Urban)

Single vehicle, roadway departure,
over speed limit (Rural)



Negotiating Curves



3,635

Total Crashes



388

Total KSI



6

Total VRU

Top Contributing Circumstances:

- Over Speed Limit
- Driving Under the Influence (DUI)
- Driving Too Fast for Conditions

Safety Countermeasure*	Crash Reduction Factor**	Estimated Cost
Delineation	16 – 25%	\$
Cross-slope Correction	Varies	\$\$
Enhanced delineation and lighting	9 – 44%	\$

*This list of countermeasures is not exhaustive; other or more suitable countermeasures may be required depending on specific site conditions and crash data.
**The Crash Reduction Factor is based on values obtained from the FHWA Crash Modification Factors Clearinghouse for various safety countermeasure applications.

EDUCATION with Elected Leaders

- Importance of Road Safety
- Funding Sources
- Review and Communicate Safety Data



Recommendations from HOA SAP:

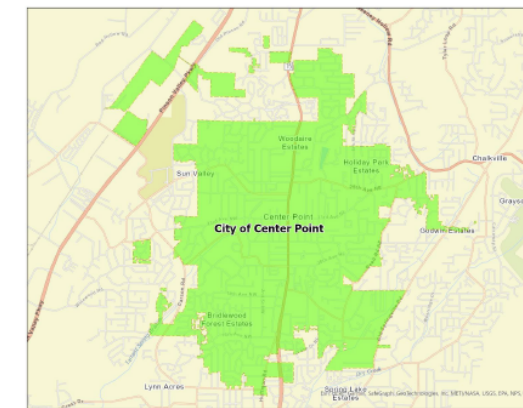
- Publish an annual Safety Spotlight newsletter with performance metrics
- Conduct a Regional Safety Summit every three years

Transportation Safety Profile* City of Center Point

2017-2021 Crash Summary		Municipality Data	
Total Crashes	968	2020 Population	16,406
Fatal Crashes (K)	6	Area	6.12 sq. mi.
Suspected Serious Injury Crashes (A)	4	Population Density	2,680.7/sq. mi.

Ranking within the Birmingham MPO (out of 51; 1=highest)

Rank	Metric
31	Crashes per 100,000 population
43	Fatal & Serious Injury crashes (KA) per 100,000 population
13	Crashes per square mile
18	KA crashes per square mile
32	Crashes per population density
40	KA crashes per population density



*All crash values are for non-interstate routes unless otherwise noted.

This report is prepared solely for the purpose of identifying, evaluating and planning safety improvements on public roads; and is therefore exempt from open records, discovery or admission under Alabama law and 23 U.S.C. §§ 148(h)(4), and 409.

Transportation Safety Profile – City of Center Point Page 2

The values in the following table represent a descriptive analysis of crash occurrence, crash type or crash severity during the five-year period from 2017 through 2021 and do not imply an overrepresented crash pattern. The descriptive approach involves identifying traffic or geometric characteristics associated with crash types and/or severities. These characteristics and features are not necessarily causes of crashes but are associated with the occurrence of crashes.

Notable Crash Types (2017-2021)		
Number of Crashes	Type	Countermeasure Categories (refer to key)
359 (KA-3)	Residential area, including playground and school areas	H, I, J, P, Q
258 (KA-8)	Dark conditions	E, F
229	Wet conditions	N, Q
207 (KA-7)	Single vehicle	A, B, C, E, F, M, N, O, P, Q, S
168 (KA-2)	Intersection related	A, H, I
103 (KA-4)	Run-Off Road, Ditch, Culvert, Embankment (Not including Fixed Objects)	B, C, E, M, N, O, P, Q
92 (KA-1)	Horizontal curve related	B, C, E, M, N, O, P, Q
90	Older Driver Involved	E, F, H, N, O
79 (KA-3)	Overturn/rollover/ran off road	C, E, M, O, Q
56 (KA-1)	Fixed objects	A, J, M
50 (KA-1)	Side impact (90 degrees and angled)	C, H, I, M, N, P
40 (KA-1)	Driving too fast for conditions (not over the speed limit)	C, N, P, Q
35 (KA-1)	Failed to yield / traffic signal-controlled	C, H, I, M, N, P
5 (KA-2)	Pedestrian involved	K, P, Q
5 (KA-1)	Motorcycle involved	C, E, N

This report is prepared solely for the purpose of identifying, evaluating and planning safety improvements on public roads; and is therefore exempt from open records, discovery or admission under Alabama law and 23 U.S.C. §§ 148(h)(4), and 409.



EDUCATION with At-Risk Drivers

- Partnership with UA's Translational Research for Injury Prevention Lab
- Safe Driving Education in a Simulator



HOA SAP Demonstration Grant:

- Research driver reactions to safety countermeasures



TRIP LAB

THE UNIVERSITY OF
ALABAMA

EDUCATION with Transportation Practitioners

- Host Training

- Road Safety Assessments & Selecting Safety Countermeasures
- Accommodating Pedestrians and Cyclists
- CARE Safety Portal



Recommendations from HOA SAP:

- Addressing Safety Issues in School Zones
- Safety Considerations in Roadway Maintenance

ADVOCACY

- Champion road safety in the TIP
- Safety messaging via website and social media



Recommendations from HOA SAP:

- Provide model ordinances to cities & counties
- Create a Safety Action Committee to track performance metrics
- Advocate for safety in potential legislative actions



Regional Planning Commissio...

Jul 30 · 🌐

This month, we sat down with Yaquelin (Jacky) Herrera, a Safety & Quality Control Engineer at ALDOT, to learn more about her advocacy for transportation safety.

[#SS4A](#) [#HeartofAlabama](#)
[#SafetyChampion](#)



Forrest Johnson, E.I.

City of Birmingham Department of Transportation
Traffic Systems Engineer

SUPPORT



- **APPLE Program**
 - **Problem diagnosis**
 - **Recommendations**
- **Connect local governments to funding**
- **Track the safety performance metrics**



Recommendation from HOA SAP:

- **Update High Injury Network every 5 years**

Safety Projects in the Heart of Alabama

NEW ROUNDABOUTS



I-65 @ AL-160 & AL-160 @ US-31, Blount County



US-280 @ Cahaba Road, Mountain Brook

NEW ROUNDABOUTS

Blue Lake Dr @ Sicard Hollow Rd, Vestavia Hills



Old Tuscaloosa Hwy @ Lowetown Rd, Jefferson County

ROAD REALIGNMENT



Before

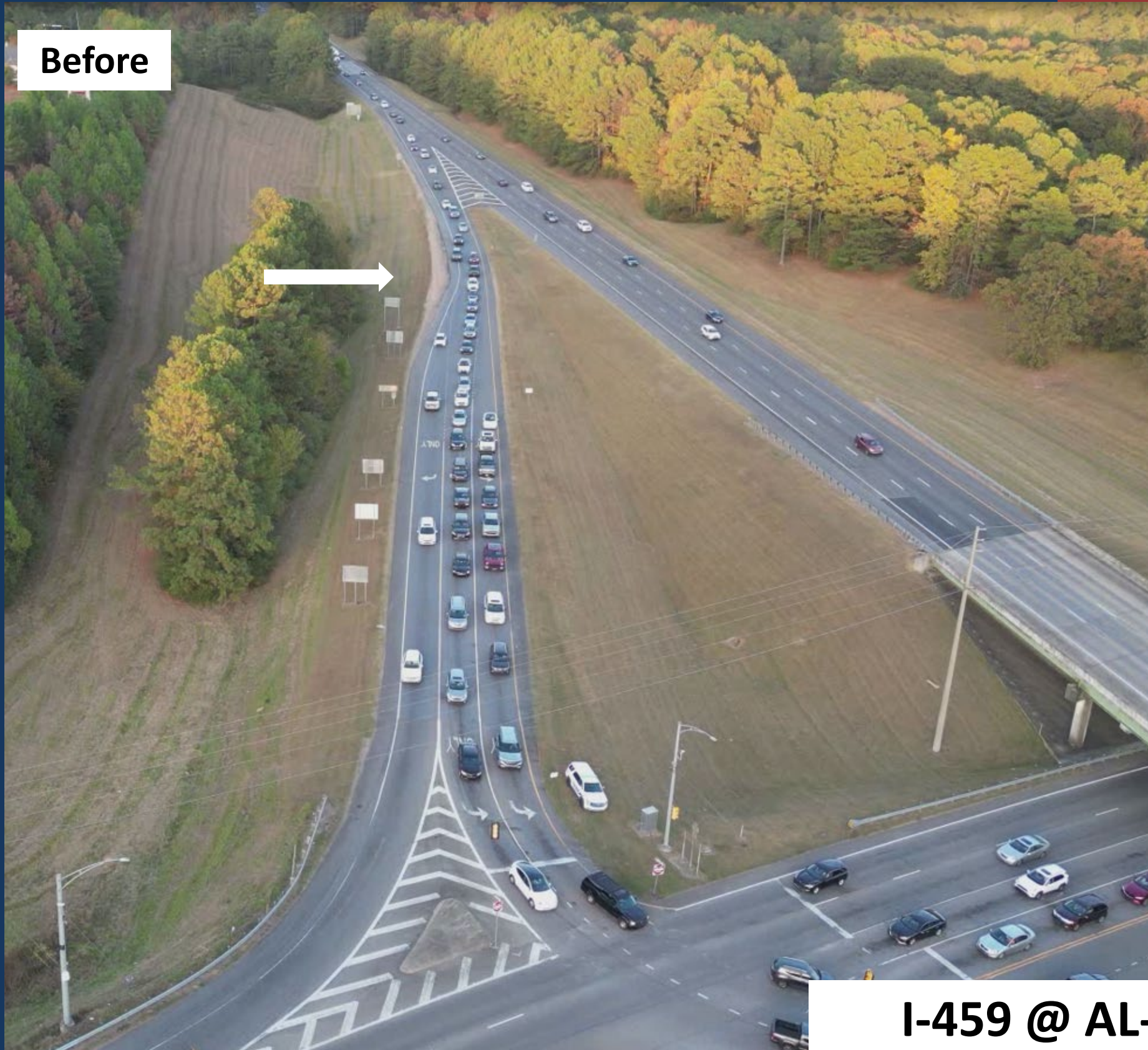
CR-47 and CR-39, Chelsea



After

RAMP IMPROVEMENTS

Before



After



I-459 @ AL-150, Hoover

INTERSECTION IMPROVEMENTS



I-65 @ US-31/Columbiana Rd, Vestavia Hills



Mike (Kaz) Kaczorowski
mkaczorowski@rpcgb.org
(205) 251-8139



S A I N
A S S O C I A T E S

Becky White
bwhite@sain.com
(205) 263-2141