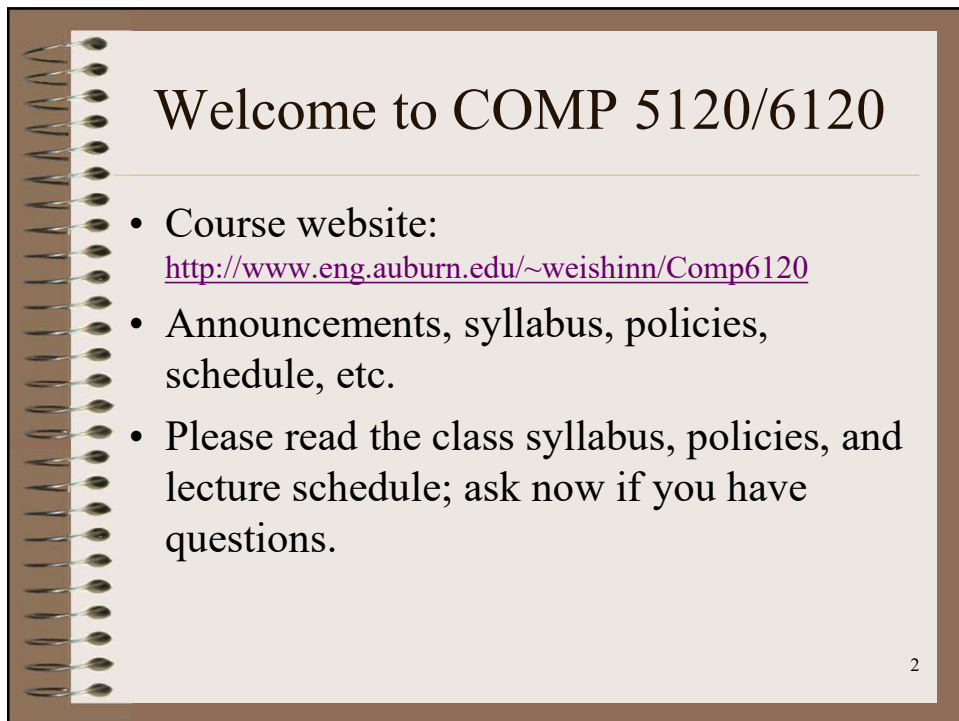


1



2

## The Instructor

---

- Wei-Shinn "Jeff" Ku
  - Email: [weishinn@auburn.edu](mailto:weishinn@auburn.edu)
- Research Interests
  - Databases
  - Spatial Data Management
  - Location-based Services
  - Geographic Information Systems

3

3

## Teaching Assistant

---

- Mr. Po-wei Harn
  - Email: [pzh0039@auburn.edu](mailto:pzh0039@auburn.edu)
- CSSE PhD student
- Shelby Center 2307
- Office hours: Monday and Wednesday 3 pm – 4 pm

4

4

## Course Goals

- User Perspective
  - How to use a database system?
  - Conceptual data modeling, the relational data model, database schema design, relational algebra, and the SQL query language.
- System Perspective
  - How to design and implement a database system?
  - Data representation, indexing, query optimization and processing, (transaction processing, concurrency control, and crash recovery), etc.

5

5

## Textbooks

- Ramakrishnan and Johannes Gehrke, *Database Management Systems*, Third Edition, McGraw Hill (main textbook)
- Connolly & Begg, *Database Systems: A Practical Approach to Design, Implementation, and Management*, Sixth Edition, Pearson, 2014

6

6

## Course Format

- Three 50 min lectures/week
- Four assignments
- One term project
- Two exams

7

7

## Lectures

- Lecture slides will be posted shortly before or after each lecture
- Lectures are important for guiding your reading of the textbook (and will be covered in exams and assignments)
  - So please attend lectures regularly

8

8

## Assignments

---

- Mostly paper-based.
- Due by the end of the due date (class).
- *No late homework will be accepted.*

9

9

## Term Project

---

- ~ 15 SQL queries
- MySQL – open source DBMS

10

10

## Exams

- Midterm and Final (closed book, closed notes)
- *Check dates and make sure no conflict!*
  - No makeup exams unless exceptional cases.

11

11

## Tentative Grading Breakdown

- Assignments: 10%
- Project: 30%
- Midterm: 25%
- Final: 35%

12

12

## Office Hours

- The instructor
  - Friday 3:30 pm – 4:30 pm, others by appointment
- The TA
  - Monday and Wednesday 3 pm – 4 pm
- If you have a question
  1. talk to people in the class
  2. email the TA
  3. go to office hours to talk to the TA or the instructor

13

13

## How to Get the Most out of this class?

- Study and discuss with your peers
  - Discuss readings to enhance understanding.
  - Discuss assignments but write your own solution!
- Use lectures to guide your study
  - Use them as a roadmap for what's important.
  - Lectures are starting points– they do not cover everything you should read.

14

14

## Next Lecture ...

---

- Read Chapter 1 – Overview of Database Systems

15